
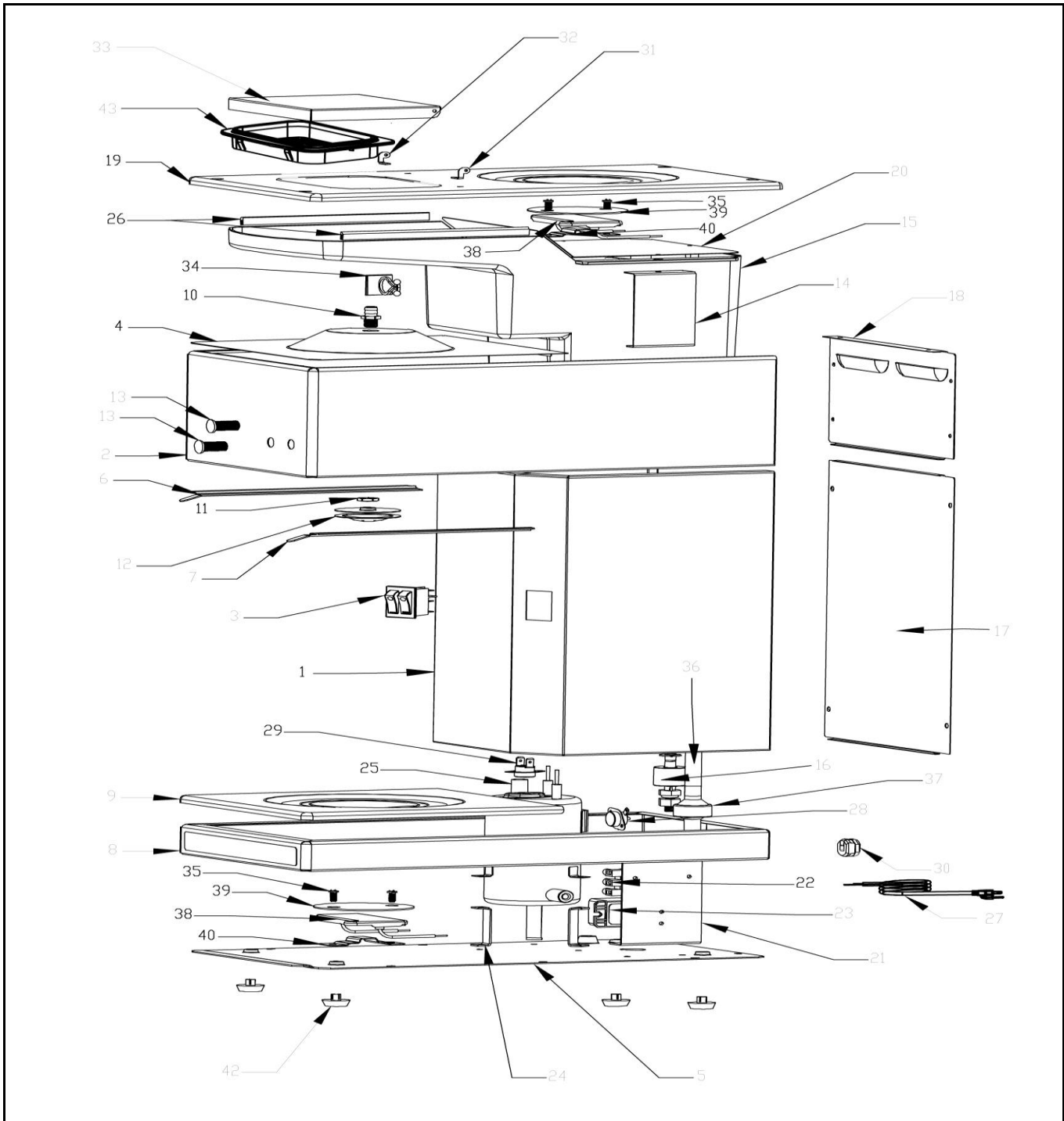



Drawing

 HENDI FOOD SERVICE EQUIPMENT Hendi B.V. Steenoven 21 3911 TX Rhenen The Netherlands	Batch #	Appliance part#
	0000000	208793
	Description	
	Coffee machine 'economic'	

Date	20-03-2013	Revision #	Revision version
Revision	First bill of materials (BOM)		



Bill of materials (BOM)

 Hendi B.V. Steenoven 21 3911 TX Rhenen The Netherlands	Batch #	Appliance part#
	0000000	208793
	Description	
Coffee machine 'economic'		


Date	20-03-2013	Revision #	Revision version
Revision	First bill of materials (BOM)		

Item	Description	Part#	Quantity	Remark	Picture
1	Housing	n/a	1		
2	Upper housing	n/a	1		
3	Double switch	904220	1		
4	Cover nozzle	n/a	1		
5	Bottom cover	n/a	1		
6	Support filterholder left	n/a	1		
7	Support filterholder right	n/a	1		
8	Lower housing	n/a	1		
9	Cover	n/a	1		
10	Connector nozzle	n/a	1		
11	Nut	n/a	1		
12	Nozzle	n/a	1		
13	Indication light	904718	1		
14	Bracket reservoir	n/a	2		
15	Reservoir	n/a	1		
16	Float switch	208427	1		
17	Back lower cover	n/a	1		
18	Back upper cover	n/a	1		
19	Upper cover	n/a	1		
20	Cover reservoir	n/a	1		
21	Bracket relais/terminal	n/a	1		
22	Terminal	n/a	1		
23	Relay	208434	1		
24	Bracket boiler	n/a	3		
25	Boiler	904701	1	Including element 1900W	
26	Sealing reservoir	n/a	2		
27	Power cord (H05VV-F 3Gx1.5mm)	930021	1		
28	Clixon manual reset (145 degrees celcius)	904756	1		
29	Clixon (105 degrees celcius)	904749	1		
30	Cord inlet with retention	904374	1		
31	Hinge support right	n/a	2		
32	Hinge support left	n/a	2		
33	Lid	n/a	1		
34	Wire clip	n/a	1		
35	Stud M5	n/a	4		
36	Tube	n/a	1		
37	Valve	904770	1		
38	Element hot plate 60W	904732	2	Incl item 39	
39	Aluminum plate	nss	2	Available in set 904732	
40	Holder element hot plate	n/a	2		
42	Feet	900574	4		
43	Grid	n/a	1		
*	Filter holder	904763	1	Not shown on expl view.	

n/a -> not available

nss -> not sold separately

Circuit diagram

 <p>Hendi B.V. Steenoven 21 3911 TX Rhenen The Netherlands</p>	Batch #	Appliance part#
	0000000	208793
	Description	
	Coffee machine 'economic'	

Date	20-03-2013	Revision #	Revision version
Revision	First bill of materials (BOM)		

